



MONTHLY MEMBERSHIP PROGRESS REPORT

District 201W1

Results as of: 05/31/2018

GMT: ANN ELDRIDGE

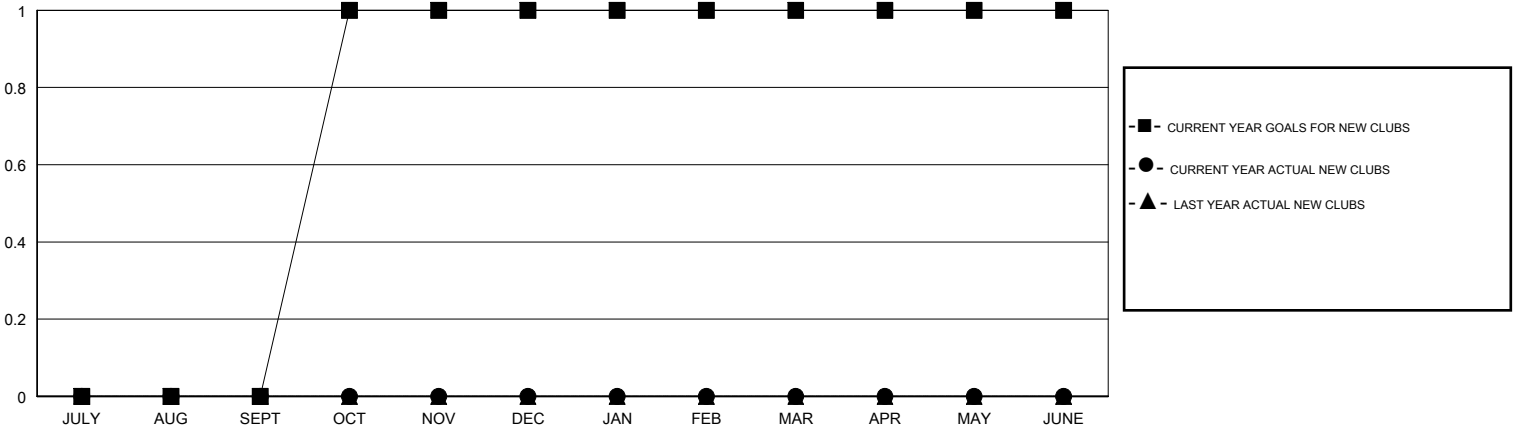
LOCATION AUSTRALIA

GMT CA

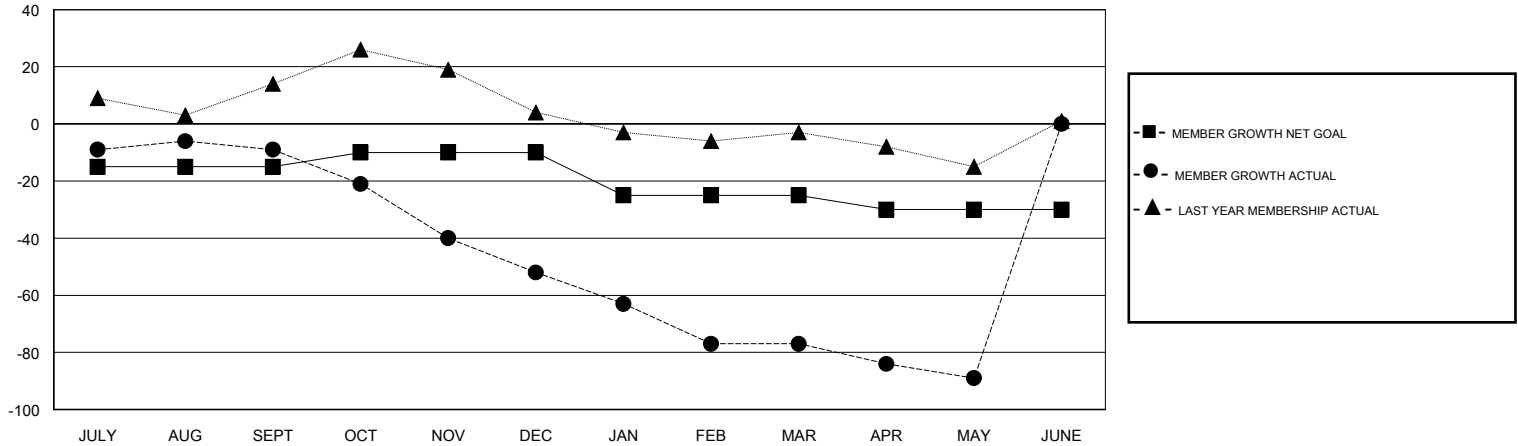
Clubs			
RESULTS FOR 2017-2018			
QUARTER	NEW CLUB GOAL	NEW CLUBS	DROPPED CLUBS
JULY/AUG/SEPT	0	0	0
OCT/NOV/DEC	1	0	1
JAN/FEB/MAR	0	0	0
APR/MAY/JUNE	0	0	0

Members			
RESULTS FOR 2017-2018			
QUARTER	MEMBER GROWTH NET GOAL	MEMBER GROWTH ACTUAL	DROPPED MEMBERS ACTUAL (including transfers)
JULY/AUG/SEPT	-15	23	29
OCT/NOV/DEC	5	20	51
JAN/FEB/MAR	-15	23	42
APR/MAY/JUNE	-5	12	22

GOALS AND ACTUAL NEW CLUBS CUMULATIVE



GOALS AND ACTUAL MEMBERS CUMULATIVE



DROPPED CLUBS: 1	25 CLUBS OF 45 ADDED 1 OR MORE NEW MEMBERS	<u>GENDER DISTRIBUTION</u> MALE 439 (56.79%) FEMALE 334 (43.21%) Women Percentage Fiscal Year Goal: 45%
<u>DROPPED MEMBERS</u> DECEASED 6 CLUB CANCELLED 0 OTHER 138 TOTAL 144	CLICK HERE FOR CUMULATIVE MEMBERSHIP DATA	TOTAL FAMILY UNIT MEMBERS 208 FAMILY MEMBERS PAYING HALF DUES 106